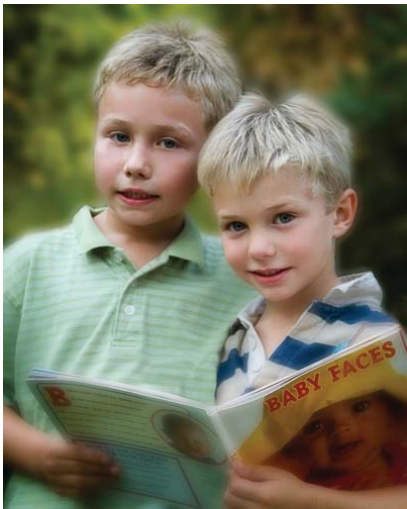
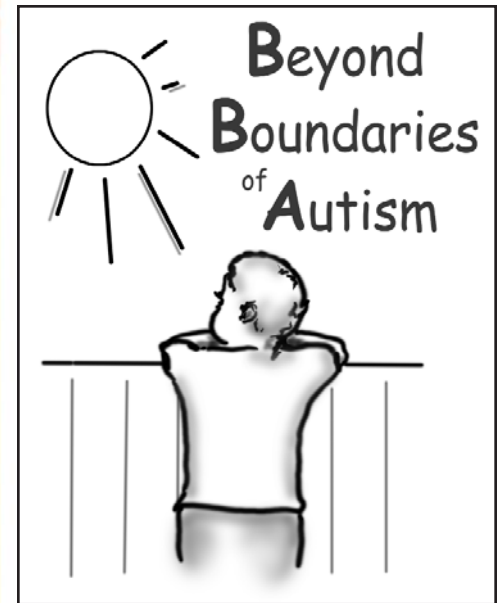


Our Mission

Beyond Boundaries of Autism will help children with autism maximize their independence and manage their behaviors to be successful in their homes, schools, and communities. We believe it is important to cultivate natural supports and choices based on the desires of the child and family.



Beyond Boundaries of Autism
P.O. Box 86
Malone, WI 53049-0086



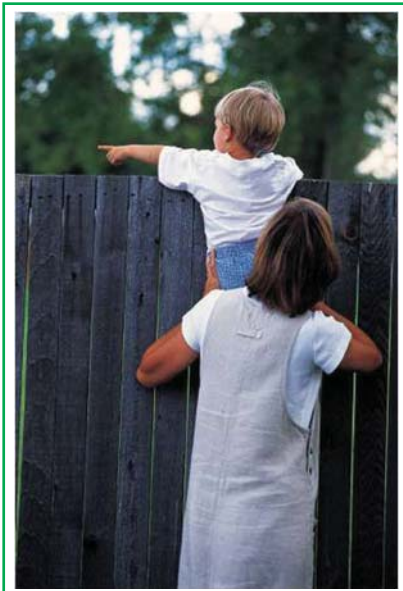
Fostering
Independence
and
Community
Participation

Beyond Boundaries of Autism

We are a not-for-profit agency focused on providing the best practices for children and individuals with autism.

Services provided

- ◆ Intensive in-home autism services
- ◆ Family mentoring services
- ◆ School/home consultation
- ◆ Behavioral Planning for individuals/families with disabilities
- ◆ Private Pay Options:
 - for families waiting for waiver slot.
 - for older children.
 - for any non-fundable services.



Our Guiding Principles



- ◆ Our services will support a child's need for acceptance, love, nurturing and security by providing approaches for learning and growth.
- ◆ We recognize children are best served within their families, and our home-based approach assures that families will be primary in service development and provision.
- ◆ Families will be provided informed, real choices and are the key determinants of selecting the supports they need.
- ◆ The home-based approach gives recognition to the importance of community participation and facilitates the building of natural supports such as friends, neighbors and volunteers.
- ◆ We value the process of collaboration with schools, agencies and those providing service coordination for the child and family.

About us

The staff members of Beyond Boundaries of Autism have been serving Wisconsin families for a number of years. In March 2004, Beyond Boundaries of Autism officially became a program of Goodwill Industries. This offers us important services and operational stability, along with the assurance that we can continue to provide treatment consistent with our mission.

Goodwill's focus on helping people with disabilities and other barriers to independence provides a strong context for our work. In addition, the partnership further helps Goodwill carry out its mission to "improve the community by improving the lives of its people through services, partnerships, collaborations and the responsible use of its resources."

Lead Therapists

Vivian Hazell, M.S.E./LPC
Program Director/Lead Therapist
State of Wisconsin Licensed
Professional Counselor

For more information, please
contact Sara Kaiser
Director of Business Operations

Beyond Boundaries of Autism
P.O. Box 86
Malone, WI 53049-0086

920-795-4183
Toll Free: 866-425-4269
Fax: 920-795-4391
skaiser_bba@gwicc.org

<http://www.goodwillncw.org/bba.htm>